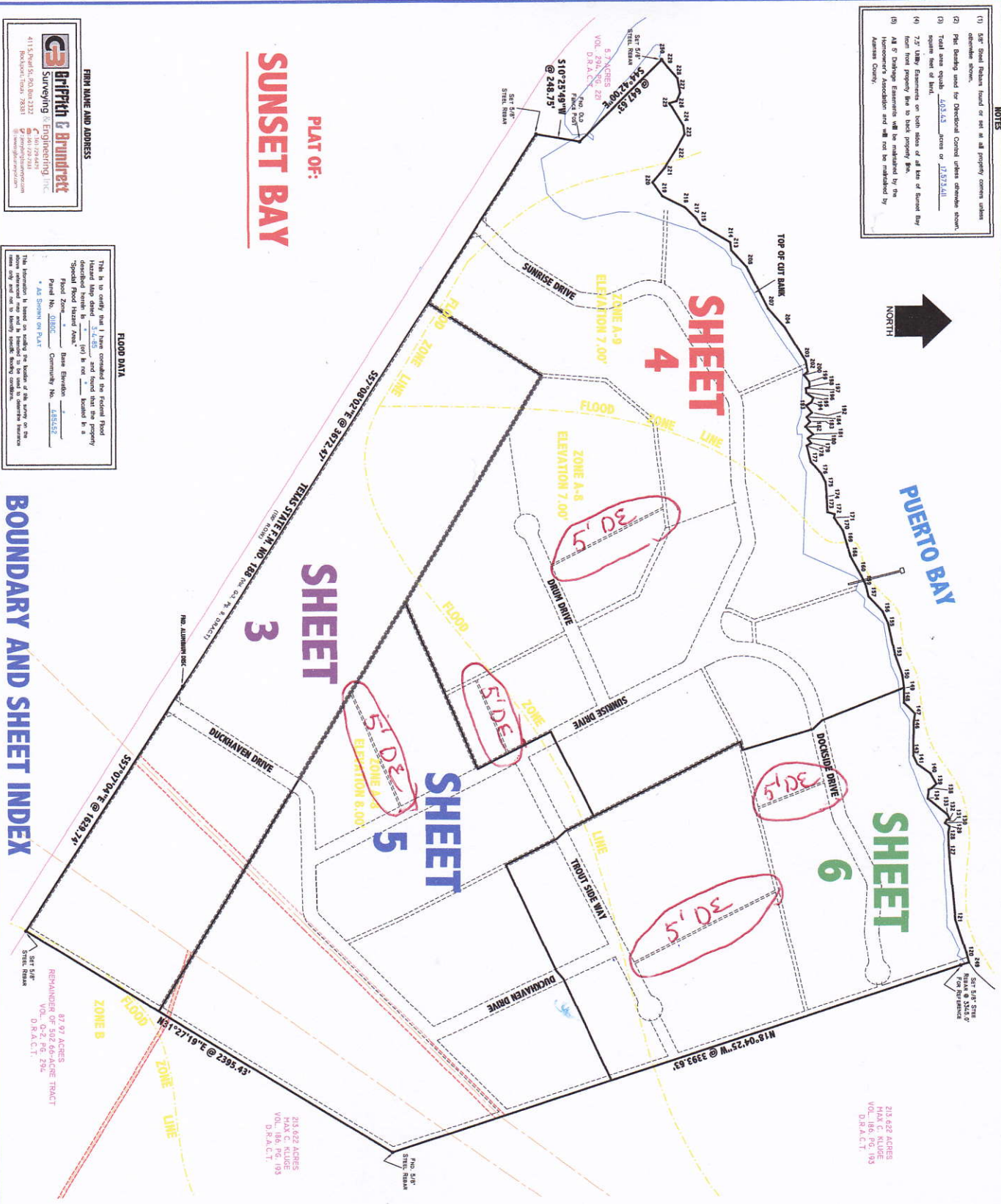


5' Drainage Easements will Be Maintained By P.O.A.

- NOTES**
- (1) Set Steel Pins found or set at all property corners unless otherwise shown.
 - (2) P.O.A. Dealing with the Development Control unless otherwise shown.
 - (3) Total area equals 453.53 acres or 12,533.41m.
 - (4) 7.5' Utility Easements on both sides of all lots of Sunset Bay from front property line to back property line.
 - (5) All of Change Easements will be maintained by the Homeowners' Association and will not be maintained by Agency Company.



SHORELINE MEAN HIGH WATER CALLS

PROPERTY #	BEARING	DISTANCE
101	S 87° 14' 00" W	54.80'
102	S 87° 14' 00" W	54.80'
103	S 87° 14' 00" W	54.80'
104	S 87° 14' 00" W	54.80'
105	S 87° 14' 00" W	54.80'
106	S 87° 14' 00" W	54.80'
107	S 87° 14' 00" W	54.80'
108	S 87° 14' 00" W	54.80'
109	S 87° 14' 00" W	54.80'
110	S 87° 14' 00" W	54.80'
111	S 87° 14' 00" W	54.80'
112	S 87° 14' 00" W	54.80'
113	S 87° 14' 00" W	54.80'
114	S 87° 14' 00" W	54.80'
115	S 87° 14' 00" W	54.80'
116	S 87° 14' 00" W	54.80'
117	S 87° 14' 00" W	54.80'
118	S 87° 14' 00" W	54.80'
119	S 87° 14' 00" W	54.80'
120	S 87° 14' 00" W	54.80'
121	S 87° 14' 00" W	54.80'
122	S 87° 14' 00" W	54.80'
123	S 87° 14' 00" W	54.80'
124	S 87° 14' 00" W	54.80'
125	S 87° 14' 00" W	54.80'
126	S 87° 14' 00" W	54.80'
127	S 87° 14' 00" W	54.80'
128	S 87° 14' 00" W	54.80'
129	S 87° 14' 00" W	54.80'
130	S 87° 14' 00" W	54.80'
131	S 87° 14' 00" W	54.80'
132	S 87° 14' 00" W	54.80'
133	S 87° 14' 00" W	54.80'
134	S 87° 14' 00" W	54.80'
135	S 87° 14' 00" W	54.80'
136	S 87° 14' 00" W	54.80'
137	S 87° 14' 00" W	54.80'
138	S 87° 14' 00" W	54.80'
139	S 87° 14' 00" W	54.80'
140	S 87° 14' 00" W	54.80'
141	S 87° 14' 00" W	54.80'
142	S 87° 14' 00" W	54.80'
143	S 87° 14' 00" W	54.80'
144	S 87° 14' 00" W	54.80'
145	S 87° 14' 00" W	54.80'
146	S 87° 14' 00" W	54.80'
147	S 87° 14' 00" W	54.80'
148	S 87° 14' 00" W	54.80'
149	S 87° 14' 00" W	54.80'
150	S 87° 14' 00" W	54.80'
151	S 87° 14' 00" W	54.80'
152	S 87° 14' 00" W	54.80'
153	S 87° 14' 00" W	54.80'
154	S 87° 14' 00" W	54.80'
155	S 87° 14' 00" W	54.80'
156	S 87° 14' 00" W	54.80'
157	S 87° 14' 00" W	54.80'
158	S 87° 14' 00" W	54.80'
159	S 87° 14' 00" W	54.80'
160	S 87° 14' 00" W	54.80'
161	S 87° 14' 00" W	54.80'
162	S 87° 14' 00" W	54.80'
163	S 87° 14' 00" W	54.80'
164	S 87° 14' 00" W	54.80'
165	S 87° 14' 00" W	54.80'
166	S 87° 14' 00" W	54.80'
167	S 87° 14' 00" W	54.80'
168	S 87° 14' 00" W	54.80'
169	S 87° 14' 00" W	54.80'
170	S 87° 14' 00" W	54.80'
171	S 87° 14' 00" W	54.80'
172	S 87° 14' 00" W	54.80'
173	S 87° 14' 00" W	54.80'
174	S 87° 14' 00" W	54.80'
175	S 87° 14' 00" W	54.80'
176	S 87° 14' 00" W	54.80'
177	S 87° 14' 00" W	54.80'
178	S 87° 14' 00" W	54.80'
179	S 87° 14' 00" W	54.80'
180	S 87° 14' 00" W	54.80'
181	S 87° 14' 00" W	54.80'
182	S 87° 14' 00" W	54.80'
183	S 87° 14' 00" W	54.80'
184	S 87° 14' 00" W	54.80'
185	S 87° 14' 00" W	54.80'
186	S 87° 14' 00" W	54.80'
187	S 87° 14' 00" W	54.80'
188	S 87° 14' 00" W	54.80'
189	S 87° 14' 00" W	54.80'
190	S 87° 14' 00" W	54.80'
191	S 87° 14' 00" W	54.80'
192	S 87° 14' 00" W	54.80'
193	S 87° 14' 00" W	54.80'
194	S 87° 14' 00" W	54.80'
195	S 87° 14' 00" W	54.80'
196	S 87° 14' 00" W	54.80'
197	S 87° 14' 00" W	54.80'
198	S 87° 14' 00" W	54.80'
199	S 87° 14' 00" W	54.80'
200	S 87° 14' 00" W	54.80'

BRITTON & BRUNDETT
 Surveying & Engineering Inc.
 4115 Piedmont Road, Suite 2122
 Rockledge, Florida 32951
 Phone: (407) 591-2942
 Fax: (407) 591-2943
 Website: www.brittonbrundett.com

FLOOD DATA

This is to certify that I have consulted the Flood Hazard Map dated 3-1-05 and found that the property described herein is located in a Special Flood Hazard Area.

Flood Zone: Zone A-9
 Panel No. 186
 Community No. 18622

This information is based on existing flood hazard data for the area only and does not constitute a warranty of any kind.

BOUNDARY AND SHEET INDEX

SHEET 2 OF 6